

HUME-FOGG ACADEMIC HIGH SCHOOL

700 Broadway | Nashville, TN 37203 | 615-291-6300



882 STUDENTS

American Indian or Alaska Native
0.45 %
Asian 11.04 %
Black or African American 21.63 %
Hispanic/Latino 7.02 %
White 59.87 %
28 languages spoken



64 FACULTY & STAFF



9 COMMUNITY PARTNERS

SERVES GRADES 9-12 IN THE PEARL COHN CLUSTER

- ☒ Open Enrollment
- ☒ Offers Bus Transportation
- ☒ Offers Before or After Care

ADMINISTRATION

Executive Principal: Dr. Kellie Hargis
Assistant Principal: Mr. Kelly Harned
Assistant Principal: Lisa Bonelli
School Board Representative: Christiane Buggs

 schools.mnps.org/humefogg-academic-magnet-high-school

 @ HumeFoggKnights

 facebook.com/HumeFoggHighSchool

SCHOOL HIGHLIGHTS

- ★ Academic courses are taught at the honors or Advanced Placement (AP) level.
- ★ Students are required to take six courses per semester and must accumulate no fewer than 22.5 credits to graduate, with a minimum of three AP credits also for graduation.
- ★ We maintain a nationally recognized arts program here, including jazz, symphonic band, orchestra, visual arts, choir, theater. We also offer advanced study in Latin, Spanish and French.

DRESS CODE

No SSA (see website for dress code details)

ACADEMIC PROGRAMS

Magnet

FEATURED EXTRACURRICULAR ACTIVITIES

All TSSAA Athletics (with football exception—we coop with Hillwood for football) cheerleading, Student Government Association, debate, Mock Trial, robotics, Science Olympiad, Model UN, Youth In Government, National Honor Society, Mu Alpha Theta, JCL, yearbook, creative writing, Quiz Bowl, poetry slam, and over 80 more student led clubs and sports

FEATURED COMMUNITY PARTNERS

Frist Center, Vanderbilt University, Downtown Partnership, Downtown Nashville Public Library, Nashville Symphony, Tennessee Masonic Lodge, Barbershop Harmony Society, Tennessee Performing Arts Center, Urban Green Lab

RESOURCES & SUPPORTS

Tutoring, Advanced Placement Courses

PARENT ORGANIZATION

Quarterly meetings at Noon
PTO president: Lyn Hoyt
Contact email: lynhoytpto@gmail.com
<https://humefoggpto.blogspot.com/>



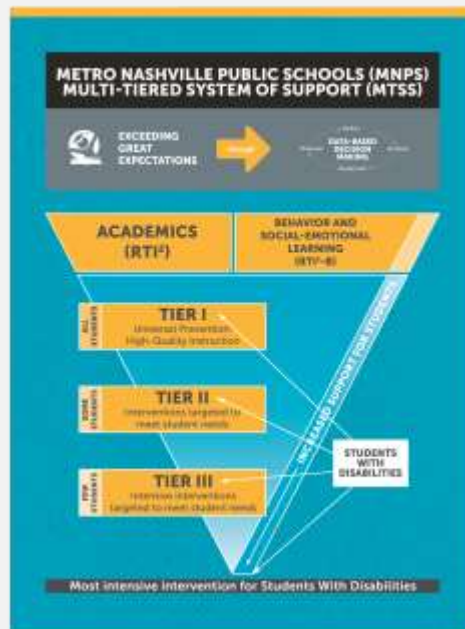
The Metropolitan Nashville Public Schools (MNPS) does not discriminate on the basis of race, religion, creed, sex, gender, gender identity, sexual orientation, national origin, color, age, and/or disability in admission to, access to, or operation of its programs, services, or activities. MNPS does not discriminate in its hiring or employment practices.

MULTI-TIERED SYSTEM OF SUPPORT (MTSS)

Metro Schools knows our students each have a unique set of needs and the teaching and learning in our classrooms must reflect that. Through our Multi-Tiered System of Support (MTSS) framework, educators and administrators have proven tools at their disposal to support a timely and effective response to academic and behavioral needs for each student — meeting the child where they are.

HOW MTSS WORKS

Our school has a dedicated MTSS team, representative of teachers and leaders throughout the building. This team meets to discuss students who may need additional supports and reviews each student’s supporting data. Our MTSS data team meets every five weeks to identify students who may need additional supports and interventions. This team monitors students’ progress and adjusts plans as needed.



MTSS IN ACTION AT HUME-FOGG ACADEMIC HIGH SCHOOL

Universal Supports for All Students	Targeted Supports and Interventions	Intensive Supports and Interventions
<ul style="list-style-type: none"> • Clear expectations for daily attendance • School-wide positive behavior expectations • Equitable access to rigorous grade-level, standards-based instruction that is culturally responsive and integrates social/emotional development • Inclusive partnerships with families and communities • Consistent school-wide discipline procedures • Physical activity and nutrition services 		<ul style="list-style-type: none"> • Behavior Intervention Plan